


SHAWANO VILLAGE

A SUBDIVISION IN
SECTIONS 13 & 14
TOWNSHIP 45 SOUTH, RANGE 38 EAST
PALM BEACH COUNTY, FLORIDA
SCALE: 1" = 100' MARCH 1952

23- **239**



DESCRIPTION

A SUBDIVISION of a portion of Fractional Sections 13 and 14, T 45 S., R 38 E., more particularly described as follows: From the corner common to Sections 13, 14, 23, 24 run North along the section line between Sections 13 and 14 a distance of 812.83 feet to the point of beginning; thence S 54° 17' 30" W a distance of 862 feet; thence West a distance of 613.00 feet; thence North 2400.10 feet; thence East 116.00 feet; thence N 53° 17' 00" E a distance of 115.00 feet; thence S 35° 15' 03" E a distance of 2237.10 feet; thence S 54° 17' 30" W a distance of 1042.25 feet to the point of beginning. Said parcel contains 31.33 Acres, more or less.

DEDICATION

KNOW ALL MEN BY THESE PRESENTS that Hillsboro Plantation Inc., a Florida corporation, the owner in fee simple of the herein described lands has caused this plat of Shawano Village to be made and does hereby dedicate to the perpetual use of the public all streets or roads shown hereon provided that such streets or roads shall revert unto Hillsboro Plantation Inc., its assigns or successors in the event such streets or roads are vacated, abandoned or discontinued by law.

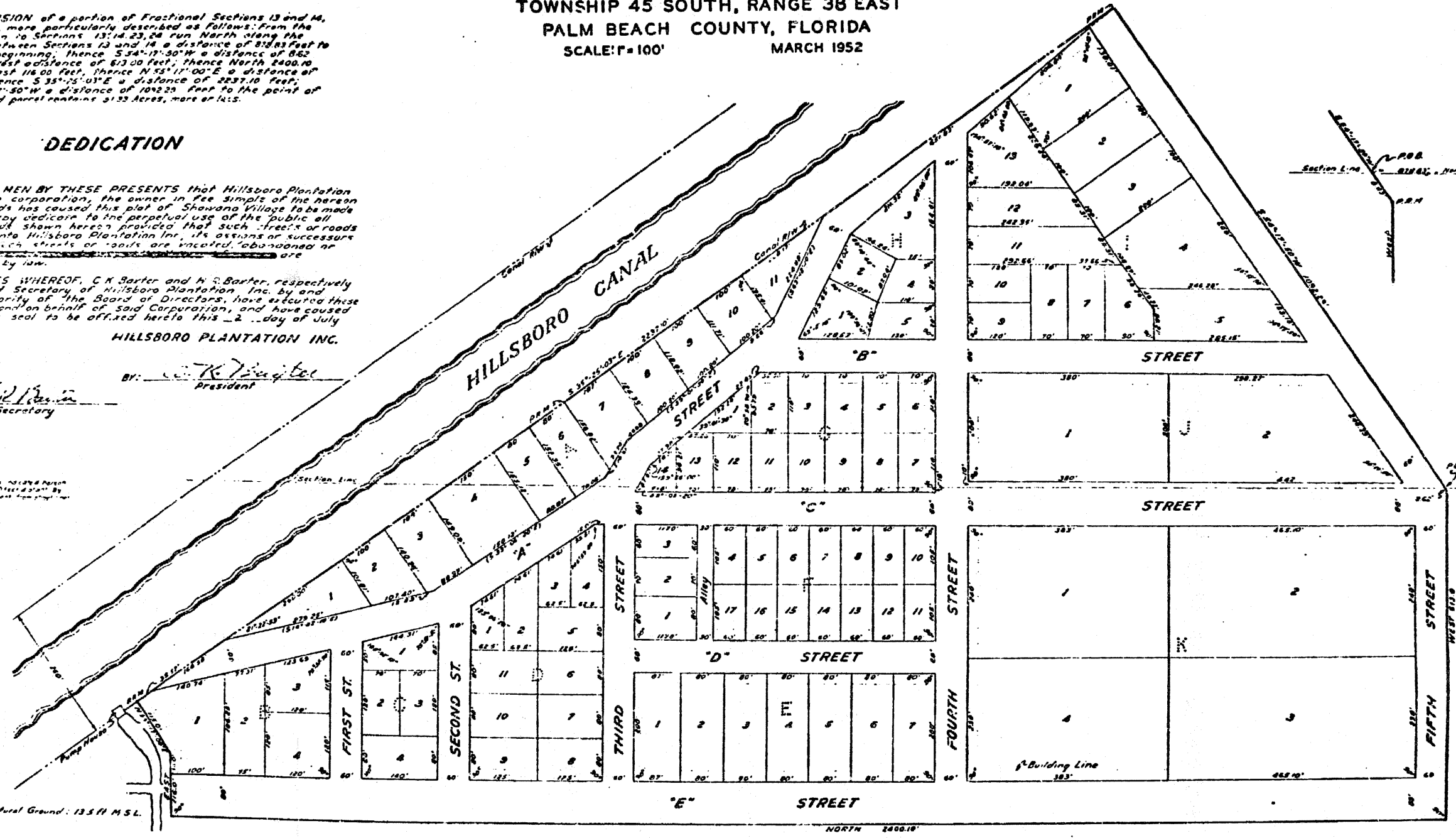
IN WITNESS WHEREOF, C. K. Barter and H. P. Barter, respectively President and Secretary of Hillsboro Plantation Inc. by and with the authority of the Board of Directors, have executed these presents for and on behalf of said Corporation, and have caused its corporate seal to be affixed hereto this 2nd day of July A.D. 1952.

HILLSBORO PLANTATION INC.

BY: C. K. Barter
President

ATTEST: H. P. Barter
Secretary

NOTE: All building lines indicated herein are based on 10' setbacks from property lines unless otherwise noted on this plat.



Elevation of Natural Ground: 13.5 ft M.S.L.

ACKNOWLEDGMENT

STATE OF PENNSYLVANIA
COUNTY OF PHILADELPHIA

BEFORE ME, the undersigned authority, this day personally appeared C. K. Barter and H. P. Barter, respectively President and Secretary of Hillsboro Plantation Inc., a Florida corporation, to me well known and known to be the persons described in and who executed the dedication of streets and roads as shown on this plat and they acknowledged to me that they executed said Dedication freely and voluntarily as President and Secretary respectively of Hillsboro Plantation Inc. for the purposes therein set forth.

WITNESS MY HAND and Official Seal of Philadelphia, Pennsylvania this 2nd day of July, A.D. 1952.

My Commission expires _____

Maxim J. Moran
Notary Public, State of Pennsylvania

APPROVAL

THIS PLAT is approved by the Board of County Commissioners, County of Palm Beach, State of Florida, this 28th day of July, A.D. 1952

Samuel J. [Signature]
Chairman

John [Signature]
County Engineer

SURVEYOR'S CERTIFICATE

I HEREBY CERTIFY that this plat of Shawano Village is a true and correct representation of a recent survey made and plotted under my direction and that permanent reference monuments have been set as indicated in accordance with the provisions of Section 7, Chapter 10275, Laws of Florida, Acts of 1925.

W. M. Prewitt
W. M. Prewitt, Lic. Cert. No. 730

CLERK'S CERTIFICATE

I HEREBY CERTIFY that this plat of Shawano Village has been examined by me and from my examination I find that said plat complies in form with the requirements of Chapter 10275, Laws of Florida, Acts of 1925.

I FURTHER CERTIFY that said plat was filed for record of 1952 on this 3rd day of July, A.D. 1952 and duly recorded in Plat Book 23 on Page 239 of the Public Records of Palm Beach County, Florida.

SAUL [Signature]
Clerk of the Circuit Court in and for Palm Beach County, Fla.

1000-728

6576